



Rudder Angle Sender

Tech Support 1-800-265-1818
<http://usa.vdo.com>

Instruction Sheet # A2C59519517

Rev 03-2011

Rudder Angle Installation:



Sensors are filled with oil DO NOT OPEN!!!!

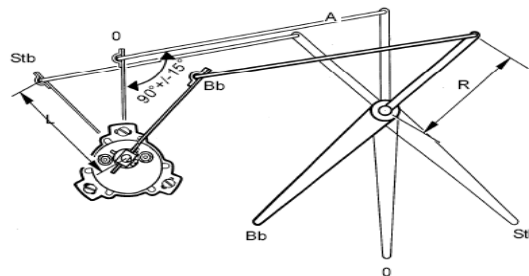
The rudder position sensor should be installed in a favorable position on the rudder segment or on the rope control. When fitting the rudder position sensor to the rudder segment of the hydraulic rudder system, choose a position in which the balance lever –A– (**not supplied**) is in its zero position (rudder in its center position), at $90^\circ \pm 15^\circ$ from the sensor lever. Make sure that the sensor lever and the balance lever have room to swivel freely. The length –L– of the sensor lever is adjustable. If the indicator unit is to give an analogue reading of the rudder's angle position the sensor length –L– has to be equal to the turning radius –R– of the rudder segment.

The balance lever –A– is not supplied

Bb = Rudder to Port

O = Rudder in Center

Stb = Rudder to Starboard



Sensor is filled with oil. Do not open!

When installing the rudder position sensor on the control rope, choose a position where the control rope passes close to the sensor axis within the lever's turning circle. Make sure that the sensor lever and balance lever –A– have room to swivel freely. The length –L– of the sensor lever is adjustable. It depends on the control rope's length of motion and has to be determined. Set the zero position (rudder in its center position) at right angles to the control rope S.

The balance lever –A– and the connecting piece –B– are not supplied

Bb = Rudder to Port

O = Rudder to Center

Stb = Rudder to Starboard



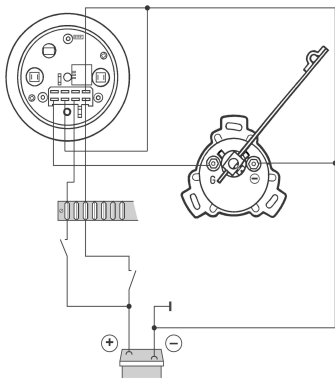
Rudder Angle Sender

Tech Support 1-800-265-1818
<http://usa.vdo.com>

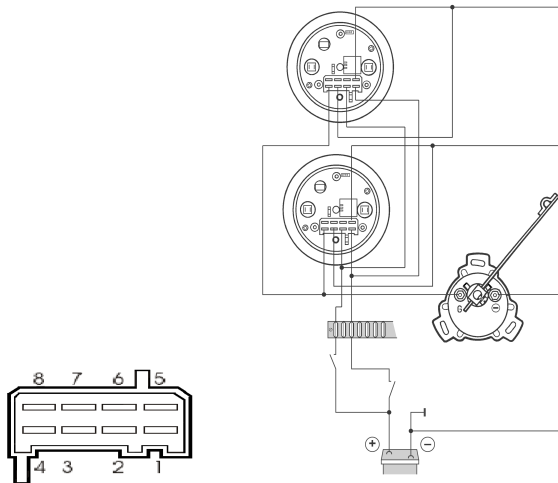
Instruction Sheet # A2C59519517

Rev 03-2011

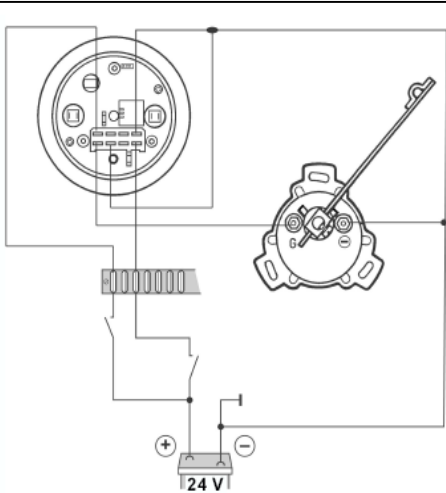
Single station 12V



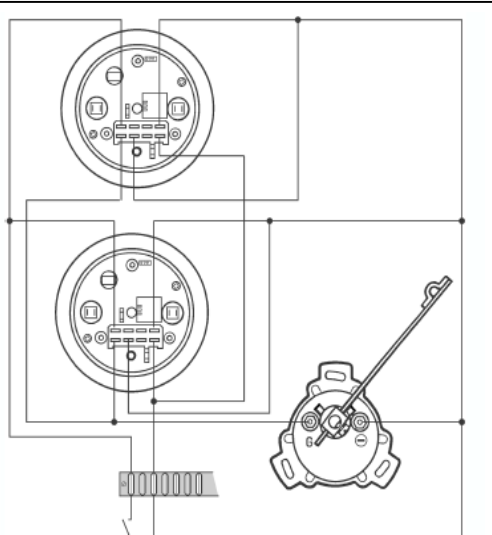
Dual station 12V



Single Station 24V



Dual Station 24V



Merchandise warranted against defects in factory workmanship and materials for a period of 24 months after purchase. This warranty applies to the first retail purchaser and covers only those products exposed to normal use or service. Provisions of this warranty shall not apply to a VDO product used for a purpose for which it is not designed, or which has been altered in any way that would be detrimental to the performance or life of the product, or misapplication, misuse, negligence or accident. On any VDO part or VDO product found to be defective after examination by manufacturer, manufacturer will only repair or replace the merchandise through the original selling dealer. Manufacturer assumes no responsibility for diagnosis, removal and/or installation labor, loss of vehicle use, loss of time, inconvenience or any other consequential expenses. The warranties herein are in lieu of any other expressed or implied warranties, including any implied warranty of merchantability of fitness, and any other obligation on the part of manufacturer, or selling dealer.

(NOTE: This is a "Limited Warranty" as defined by the Magnuson-Moss Warranty Act of 1975.)