



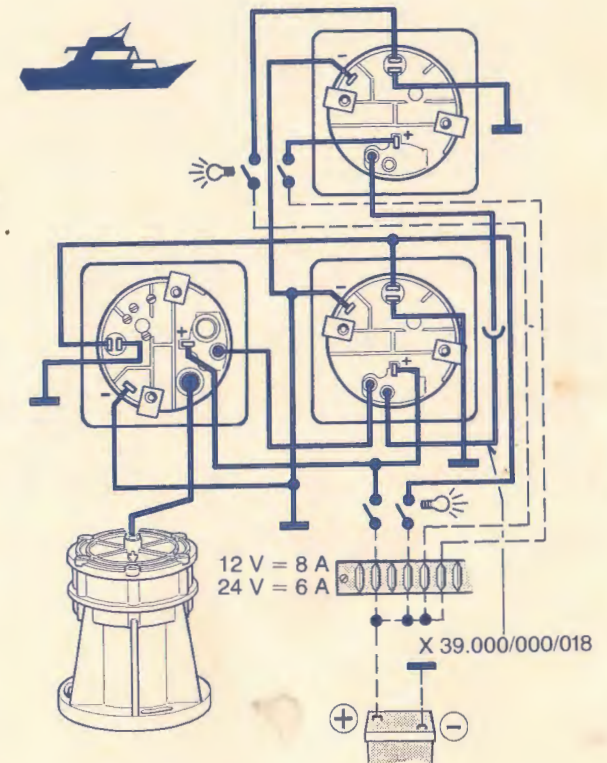
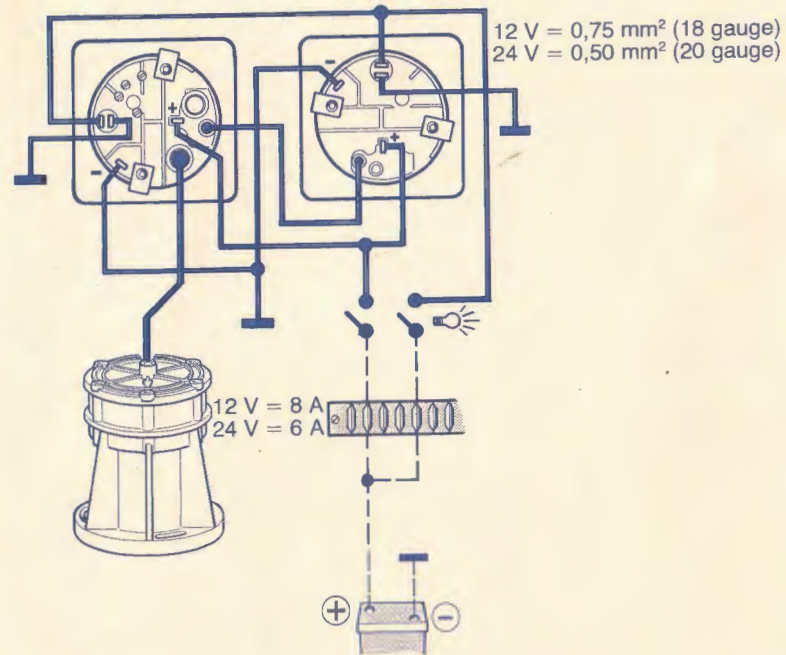
**Wichtiges Dokument.  
Bitte an Bord aufbewahren!**  
**Important Data:  
Please keep booklet on board for  
future reference!**

**Montageanleitung  
Installation Instructions  
Monteringsveiledning  
Instrucciones de montaje  
Instructions de montage**

**Analog Direction Indication System**

**Adis 360**

**VDO**



**Achtung:** ⊥ Masseverbindungen gemäß Schaltplan separat verlegen. Sonde nur stehend lagern.

**Important:** Make separate ⊥ = ground (earth) connections as shown in wiring diagram.  
Flux-gate sensor to be stored in upright position only.

**Obs:** Instrumentet skal ha separate jordledninger som vist i hht. koplingskjema. Sonden må lagres stående

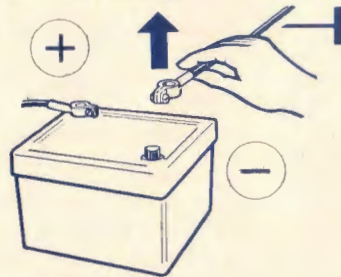
**Atención:** ⊥ Tender las conexiones a masa por separado, según el plano de distribución.  
Cuidado!, almacenar la sonda siempre en posición vertical.

**Attention:** ⊥ pour contacter avec la masse, voir schéma.  
Toujours conserver la sonde debout.

## VDO Remote Compass Adis 360

Before you start installing your Adis 360, please read the installation and operating instructions carefully. Always keep them handy on board for future reference.

First disconnect ground (earth) lead from battery.



### Installation of Flux-Gate Sensor

The material composing the hull is the deciding factor in siting the unit.

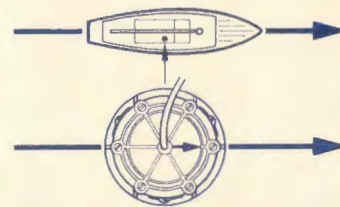
With wooden, GRP, Kevlar, or aluminum hulls, you may practically select any convenient location. Just make sure that the sensor will be a minimum safe distance of 1.5 m (4' 11") away from any fixed, moving or movable ferromagnetic parts (engine, anchor, tool boxes) and from electromagnetic fields (set up by electrical equipment, motors, loudspeakers).

With steel or ferrocement hulls, it is necessary to mount the sensor more than 1 m (3' 3-3/8") above the hull, for the hull shields off the earth's magnetic field.

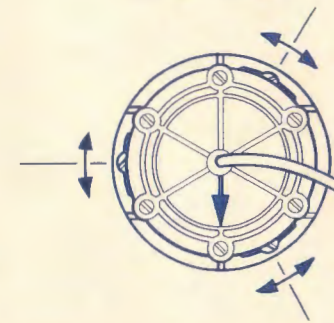
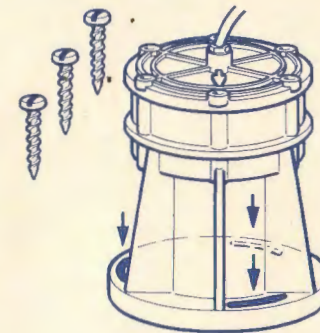
Possible sites above deck are the mast, or, in the case of non-steel superstructures, in or on the wheelhouse. Otherwise fashion a short mast from wood or aluminum as a mount for the sensor.

In any case, it is advisable to make only a temporary installation pending initial compensation for deviation. If deviation cannot be successfully compensated for, the site is unsuited.

The arrow marking the sensor housing must always point forward, coinciding with or being parallel to the boat's fore-and-aft line.



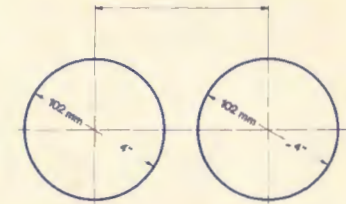
Attach the sensor with three brass screws, tightening them only moderately so that it can still be slued along the slotted mounting holes.



### Installation of Compass Display Head and Analog Computer

The installation openings should be 102 mm (4") in diameter. There is no need for observing a safe distance to other equip-

ment, with the exception of transmitting equipment and of an additional, magnetic compass.



Interconnect the components according to the wiring diagram (see foldout).

For internal lighting, put in lamps designed for the same voltage as the ship's supply (12 or 24 volt).

Do not fasten analog computer in position yet, because you must have access to switches at its rear when compensating for deviation later on.

For details of compensation, refer to the operating instructions.

Reconnect ground (earth) lead to battery.

Compensate for deviation as described in the operating instructions. Then fix sensor securely in place.

**Technical details are subject to change without notice.**